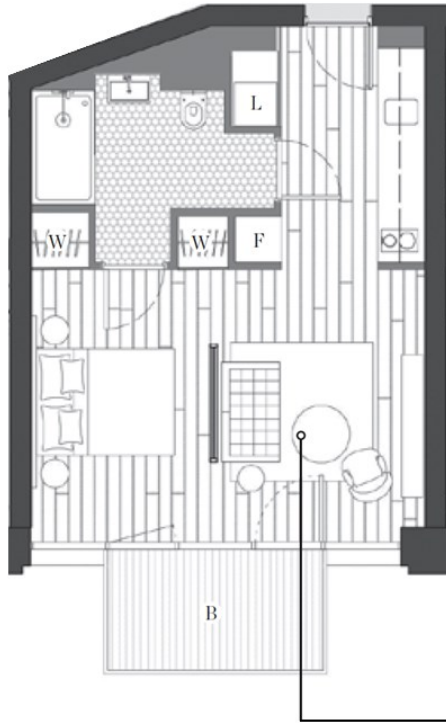


**LONDON, E14 0QL**

**£385,000  
LEASEHOLD**

This spacious studio apartment, is available for sale within the sought after London City Island development. The development features, 24-hour concierge, swimming pool and wellness facilities alongside landscaped gardens, ensuring residents have all they need on The Island. The addition of the English Ballet Theatre and London Film School, moving in 2019 to the site ensures the further development of The Island and enshrines its place in the London community.

**LPM**  
LONDON PROPERTY MANAGEMENT



## 1 BEDROOM SUITE

**Internal area:**

38.5 sqm / 414 sqft

**Balcony area:**

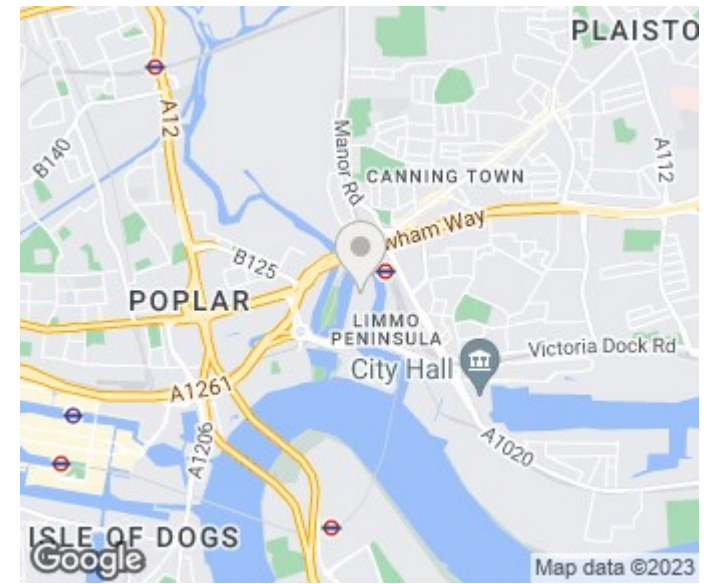
5.1 sqm / 55 sqft

**Living area:**

2900 mm x 3605 mm

**Bedroom I:**

2500 mm x 3605 mm



Energy Efficiency Rating		
	Current	Potential
Very energy efficient - lower running costs		
(92 plus) A		
(81-91) B	83	83
(69-80) C		
(55-68) D		
(39-54) E		
(21-38) F		
(1-20) G		
Not energy efficient - higher running costs		
<b>England &amp; Wales</b>	EU Directive 2002/91/EC	



LONDON PROPERTY MANAGEMENT

London Property Management  
25 Cabot Square  
London  
E14 4QZ

020 3051 8689  
emma@ldn-pm.co.uk  
25 Cabot Square

Agents Note: Whilst every care has been taken to prepare these particulars, they are for guidance purposes only. All measurements are approximate and are for general guidance purposes only and whilst every care has been taken to ensure their accuracy, they should not be relied upon and potential buyers/tenants are advised to recheck the measurements